



a PewResearchCenter project

Chronicling Latinos' diverse experience in a changing America

1615 L Street, NW, Suite 700
Washington, DC 20036
202-419-3600(main) 202-419-3608(fax)
www.pewhispanic.org

The Impact of the Economic Slowdown on Hispanic and Immigrant Workers

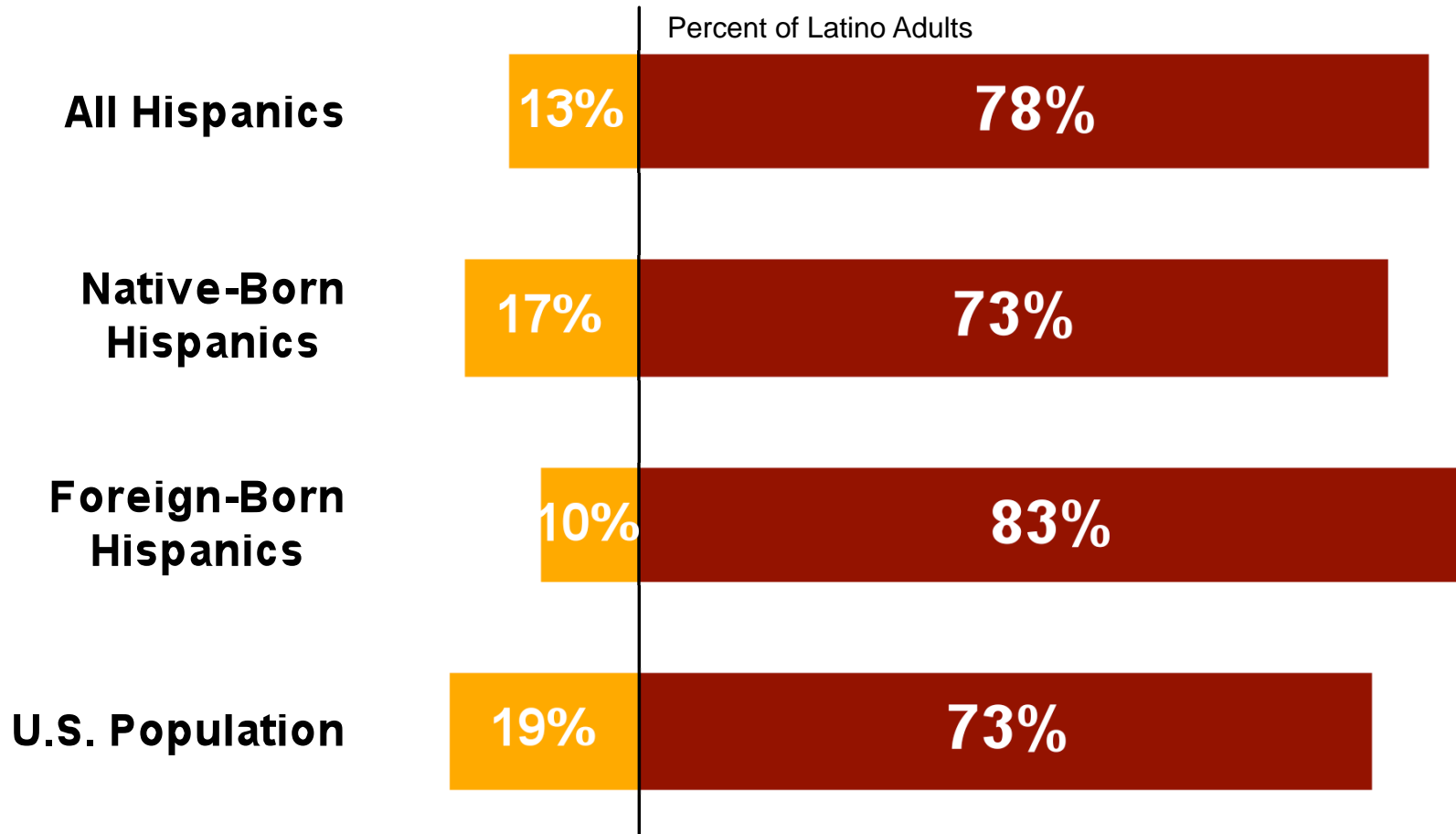
University of California - Washington Center
Immigration Reform:
Implications for Farmers, Farm Workers, and Communities
Washington, DC

Rakesh Kochhar
Pew Hispanic Center
May 21, 2009

Latino Public Opinion

Local Job Opportunities Hard to Find

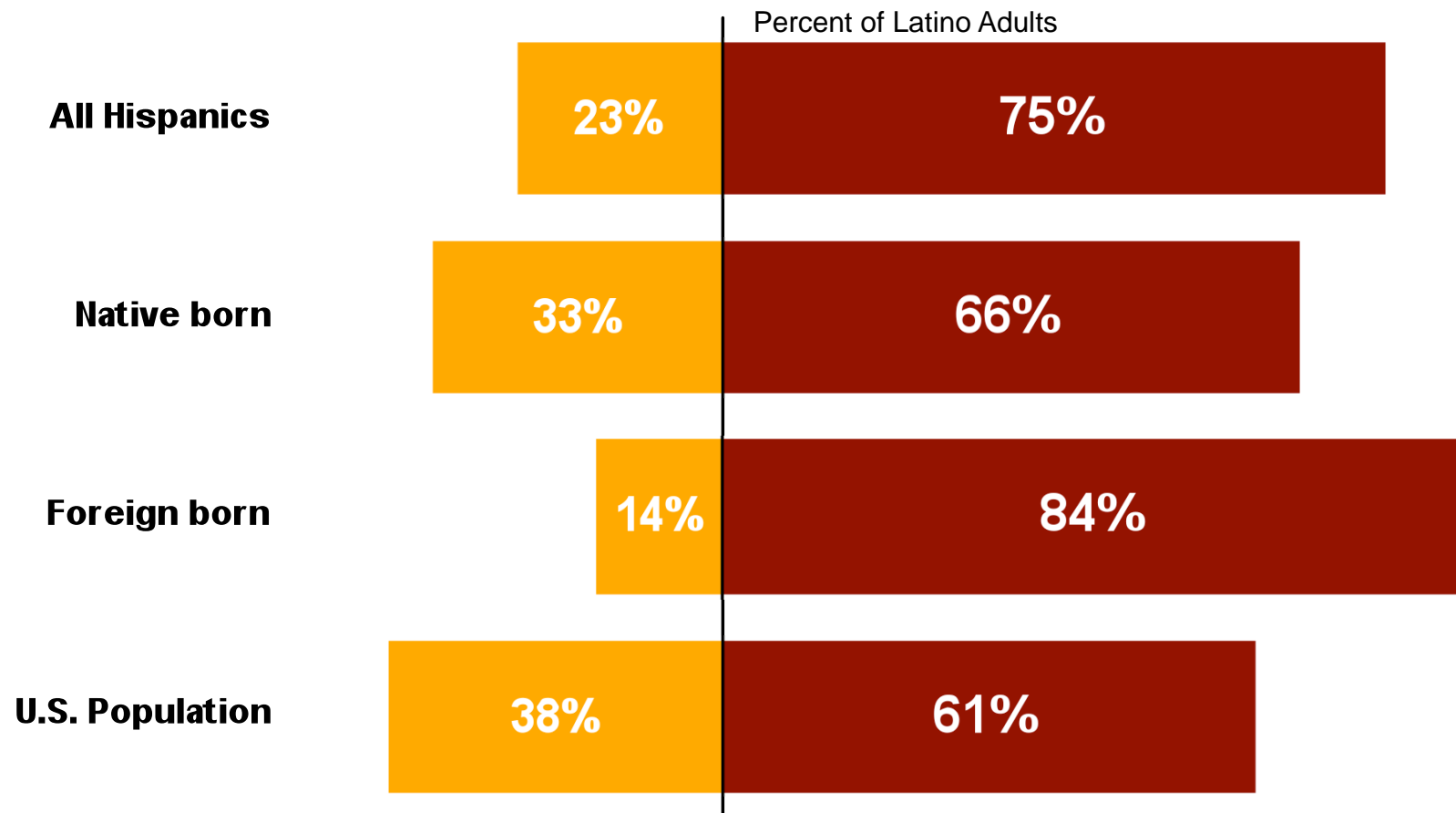
“Plenty of jobs available” | “Jobs are difficult to find”



Source: Pew Hispanic Center National Survey of Latinos 2008, Economics and Politics

Personal Financial Situation Today

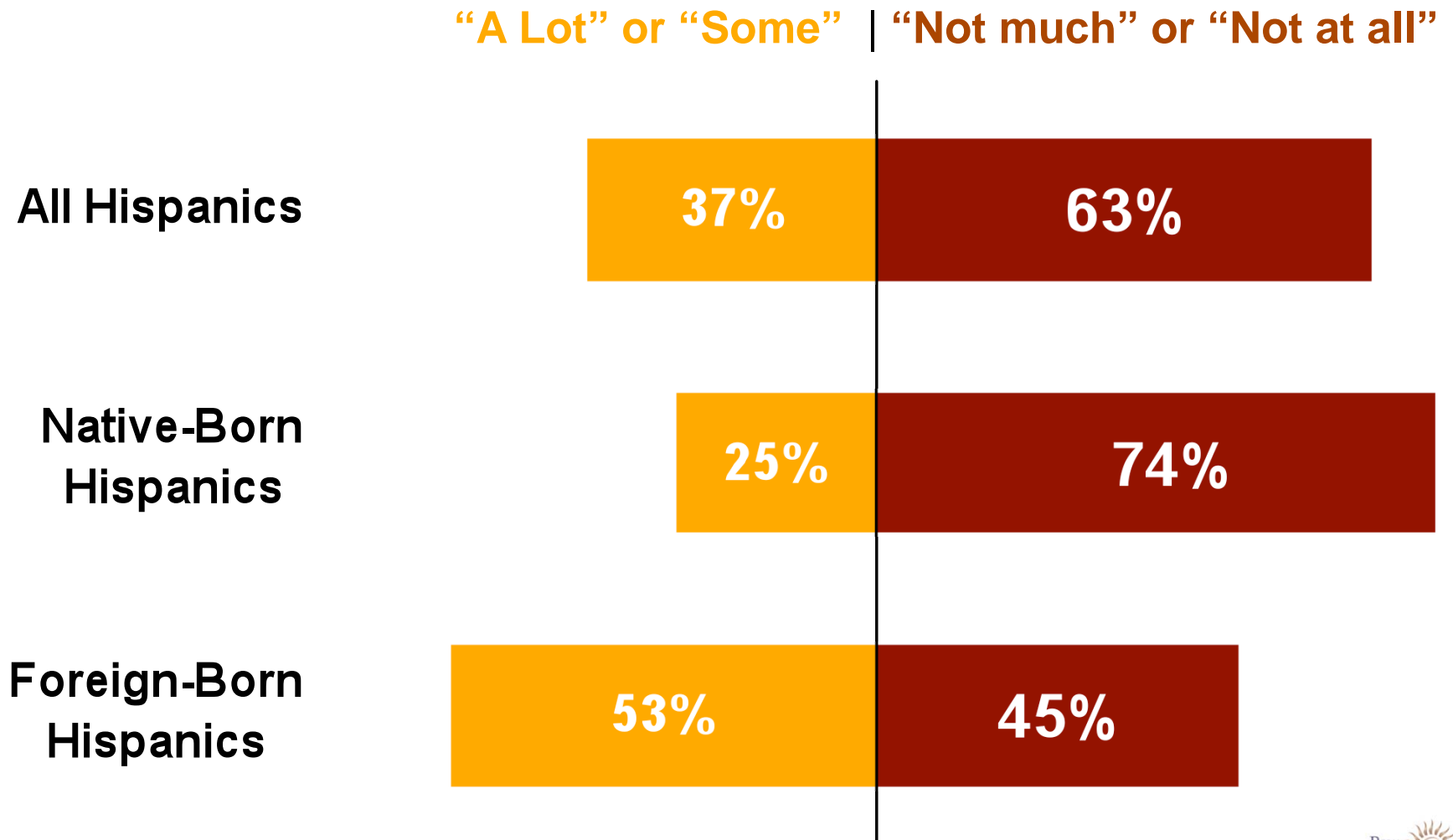
“Excellent” or “Good” | “Only Fair” or “Poor”



Source: Pew Hispanic Center National Survey of Latinos 2008, Economics and Politics

Many Latino Homeowners Worry They May Lose Their Homes to Foreclosure

Percent of Latino Homeowners

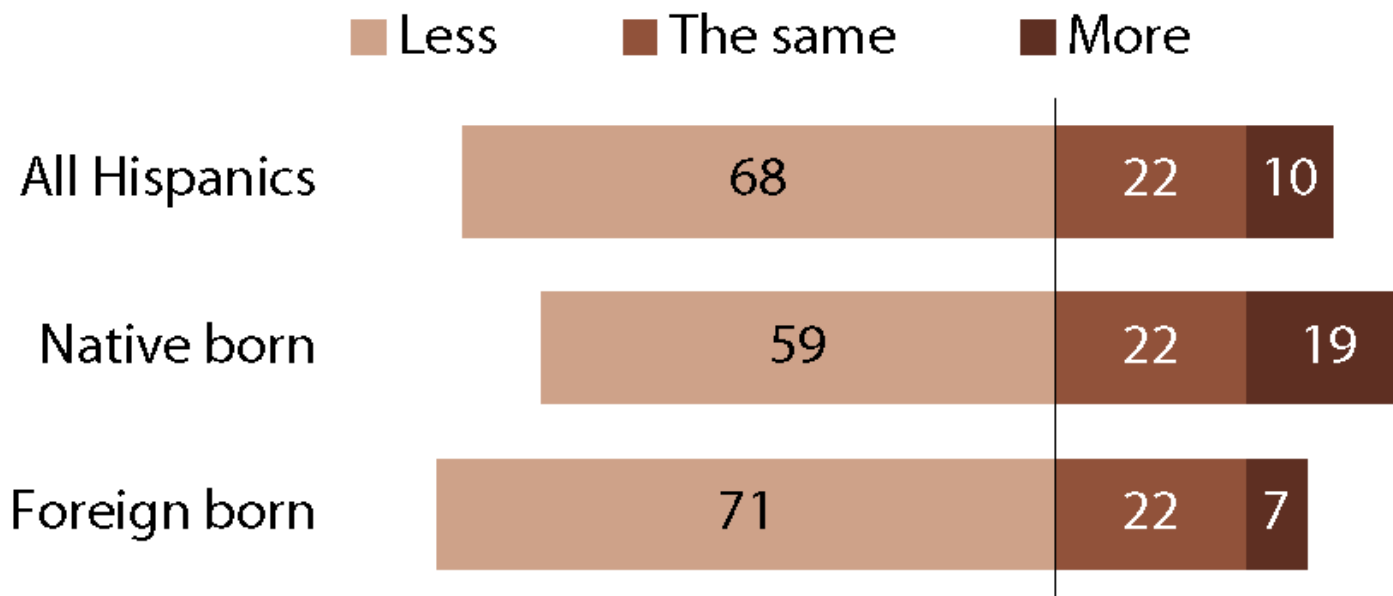


Source: Pew Hispanic Center National Survey of Latinos 2008, Economics and Politics

Figure 5

Among Those Who Sent Money Abroad, Size of Remittances Are Down

Question: Did you send more or less money than the year before? (%)



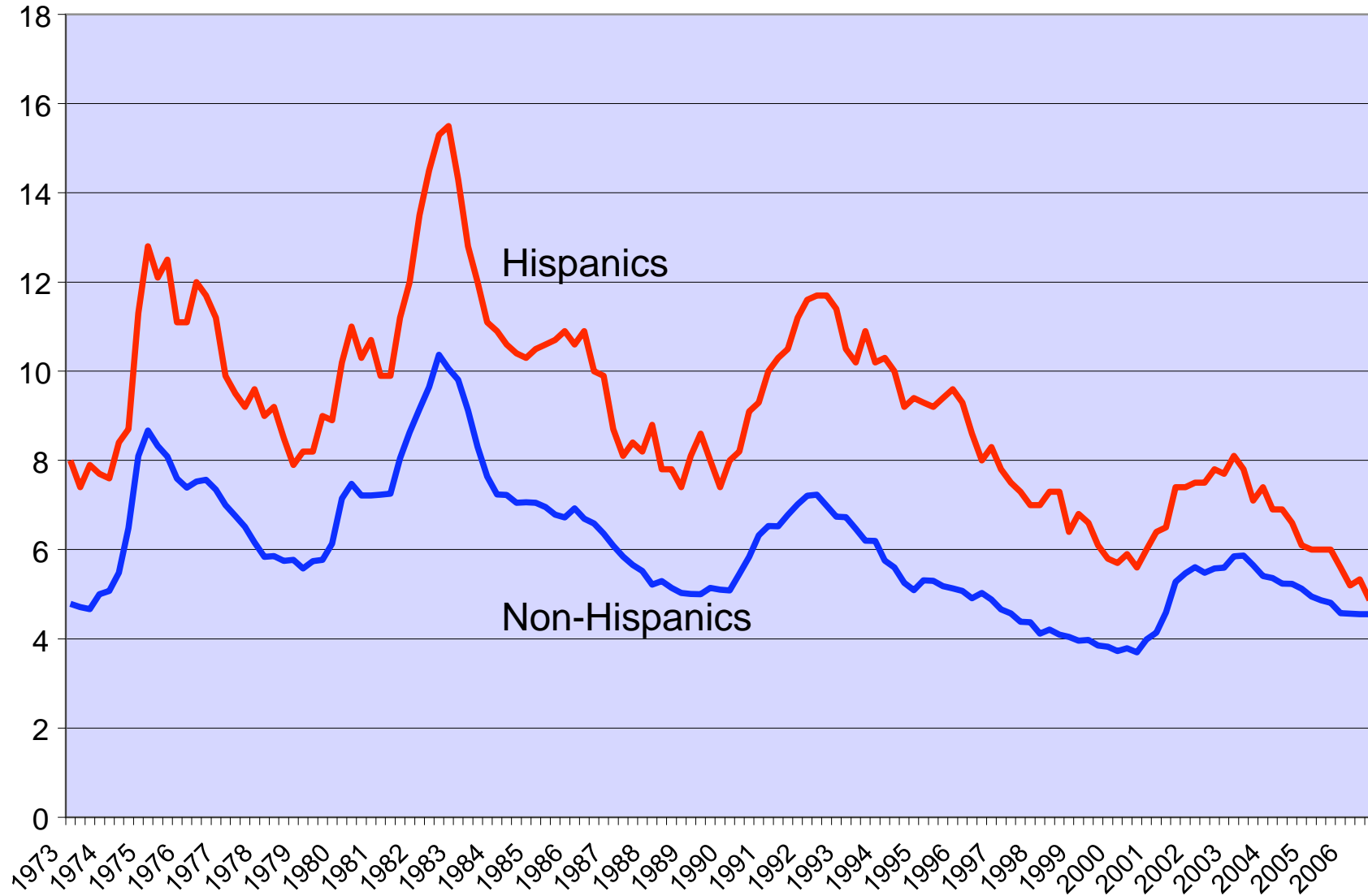
Note: Responses of "Don't know" and "Refused" not shown.

Source: Pew Hispanic Center National Survey of Latinos 2008,
Economics and Politics

Recent Economic History

The Unemployment Rate: 1973 to 2006

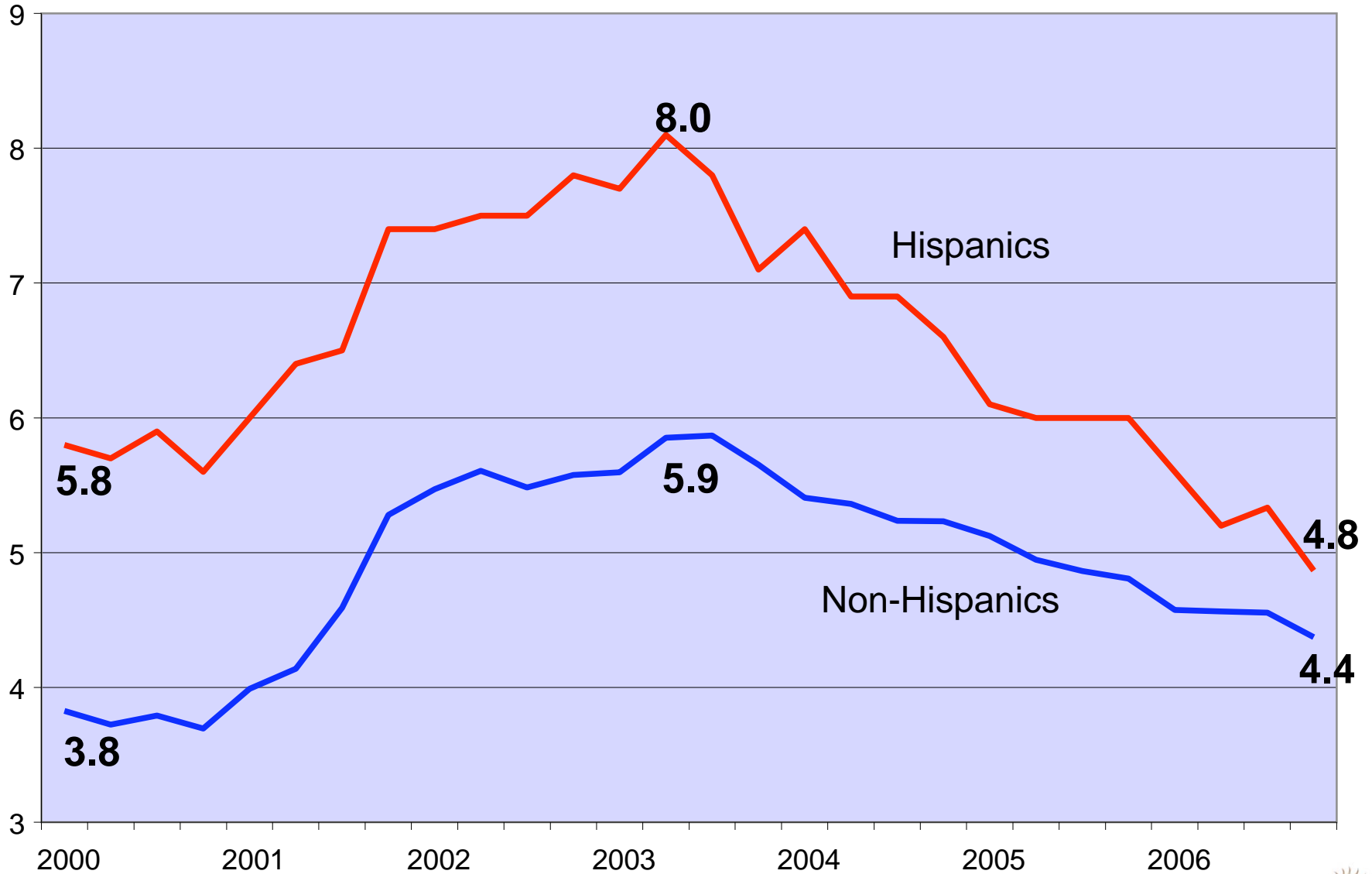
Percent



Note: The data shown are quarterly estimates of the seasonally-adjusted rate of unemployment.
Source: Bureau of Labor Statistics

The Unemployment Rate: 2000 to 2006

Percent



Note: The data shown are quarterly estimates of the seasonally-adjusted rate of unemployment.
Source: Bureau of Labor Statistics

Change in Employment and the Unemployment Rate for Hispanic Workers, 2003-2006

	All Hispanics	Native Born	Foreign Born
Change in Employment: 2003 to 2006	2.6 m.	0.7 m.	1.9 m.

Source: Pew Hispanic tabulations of Current Population Survey data

Note: Data are non-seasonally adjusted and unless otherwise noted reflect averages for the first six months of each year.

Change in Employment and the Unemployment Rate for Hispanic Workers, 2003-2006

	All Hispanics	Native Born	Foreign Born
Change in Employment: 2003 to 2006	2.6 m.	0.7 m.	1.9 m.
Unemployment Rate			
2003, 4 th quarter	7.1%	8.2%	6.1%
2006, 4 th quarter	5.0%	5.9%	4.2%

Source: Pew Hispanic tabulations of Current Population Survey data

Note: Data are non-seasonally adjusted and unless otherwise noted reflect averages for the first six months of each year.

The Role of Construction in the Employment of Hispanics, 2003-2006

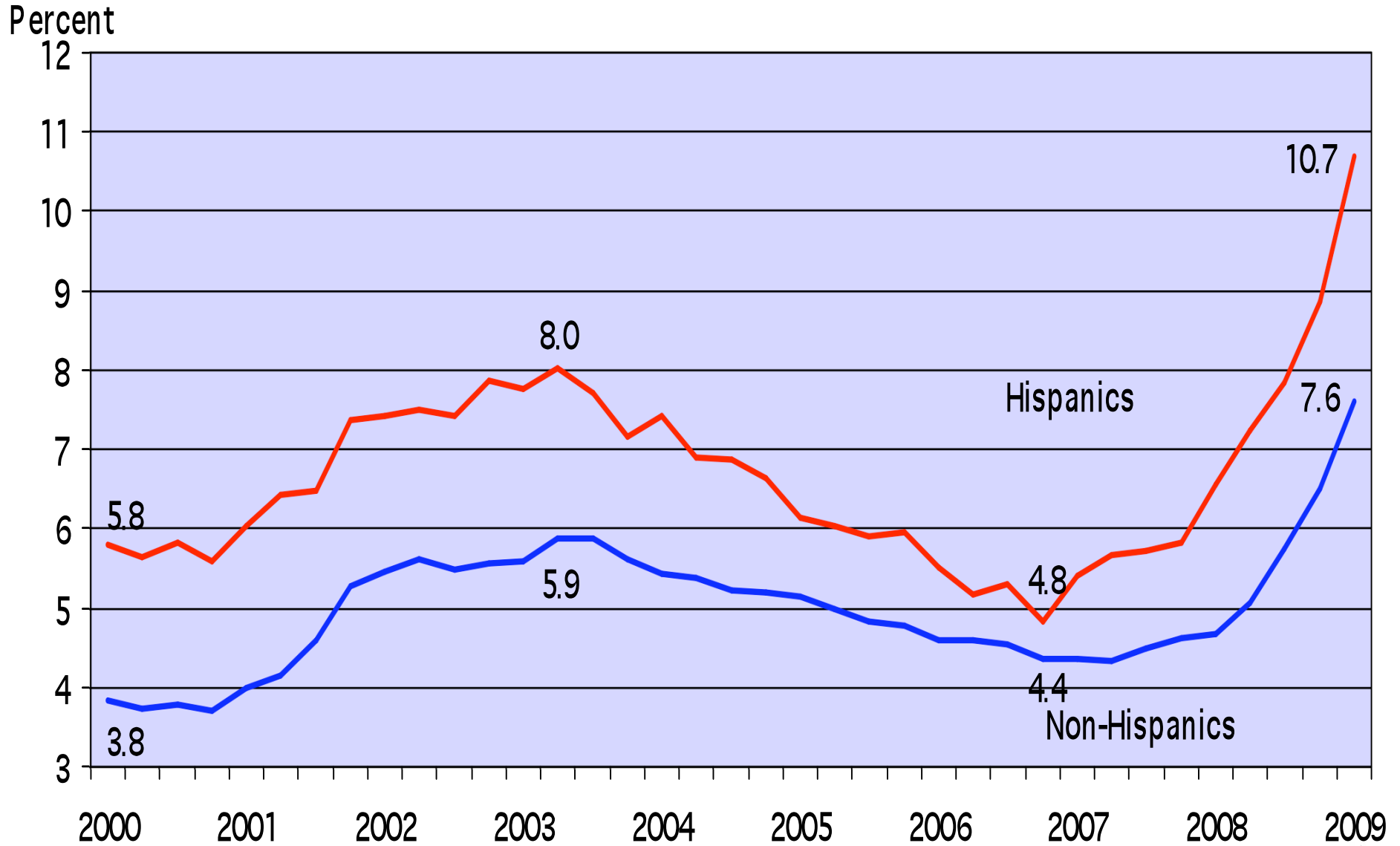
	Change in Employment: 2003 to 2006
All Hispanics	
Total	2,569,000
Construction	981,000
Share of construction	38%
Foreign-Born Hispanics	
Total	1,858,000
Construction	914,000
Share of construction	49%

Source: Pew Hispanic tabulations of Current Population Survey data

Note: Data are non-seasonally adjusted and reflect averages for the first six months of each year.

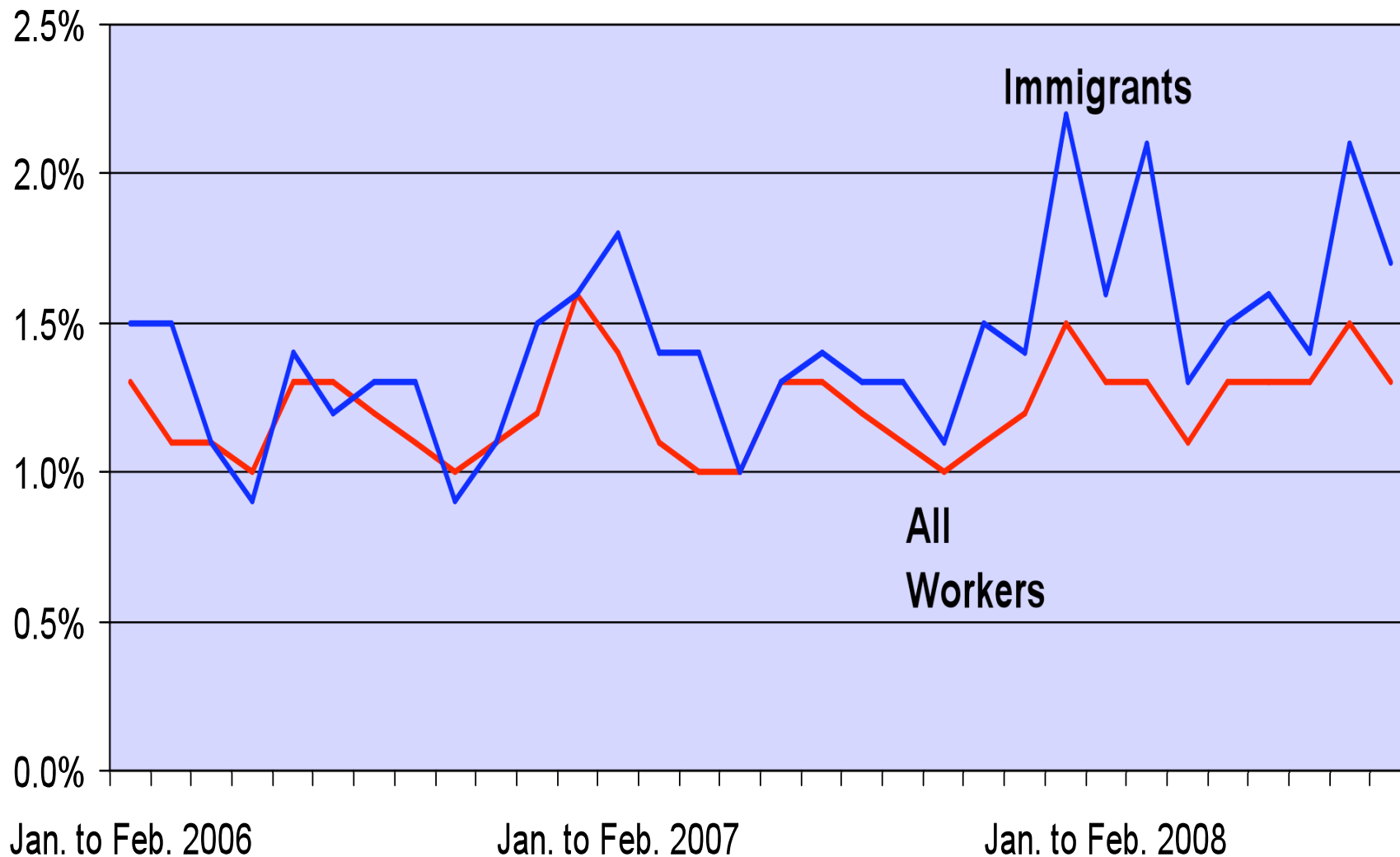
The Recession

The Unemployment Rate: 2000 to 2009



Note: The data shown are quarterly estimates of the seasonally-adjusted rate of unemployment.
Source: Bureau of Labor Statistics

The Monthly Job Loss Rate, Jan. 2006 to Sept. 2008



Source: Pew Hispanic tabulations of Current Population Survey data

Note: Percent of workers employed in one month who are unemployed or discouraged in the next month.

Employment Growth Slows and Unemployment Rises for Hispanic Workers, 2007 to 2008

	All Hispanics	Native Born	Foreign Born
Employment (thousands)			
2007: 4 th Qr.	20,435	9,304	11,131
2008: 4 th Qr.	20,290	9,451	10,839
Change	- 145	147	- 292
Unemployment Rate			
2007: 4 th Qr.	5.8%	6.7%	5.1%
2008: 4 th Qr.	8.7%	9.5%	8.0%
Change	2.9%	2.8%	2.9%

Source: Pew Hispanic tabulations of Current Population Survey data
 Note: Data are non-seasonally adjusted.

The Role of Construction in the Employment of Hispanics, 2007-2008

	Change in Employment 2007, 4 th Qr. to 2008, 4 th Qr.
All Hispanics	
Total	- 145,000
Construction	- 343,000
Foreign-Born Hispanics	
Total	- 292,000
Construction	- 283,000

Source: Pew Hispanic tabulations of Current Population Survey data
Note: Data are non-seasonally adjusted.

The Change in Employment in Selected Industries 4th Qr., 2007 to 4th Qr., 2008 (thousands)

Industry	Hispanics		Non-Hispanics	
	Native Born	Foreign Born	Native Born	Foreign Born
Construction	-60	-283	- 681	- 163
Manufacturing - Durable	32	- 93	- 276	- 3
Manufacturing - Non-Durable	- 39	- 5	- 589	- 54
Finance, Ins., Real Estate	- 79	- 36	- 235	- 51
Business Services	- 47	61	- 397	83

Source: Pew Hispanic tabulations of Current Population Survey data
Note: Data are non-seasonally adjusted.

The Change in Employment in Selected Industries 4th Qr., 2007 to 4th Qr., 2008 (thousands)

Industry	Hispanics		Non-Hispanics	
	Native Born	Foreign Born	Native Born	Foreign Born
Construction	-60	-283	- 681	- 163
Manufacturing - Durable	32	- 93	- 276	- 3
Manufacturing - Non-Durable	- 39	- 5	- 589	- 54
Finance, Ins., Real Estate	- 79	- 36	- 235	- 51
Business Services	- 47	61	- 397	83
Health Services	121	- 2	244	120
Educational Services	10	52	502	35
Eating, Drinking & Lodging	17	39	137	135
Agriculture	39	-18	175	9

Source: Pew Hispanic tabulations of Current Population Survey data
Note: Data are non-seasonally adjusted.